

europan 8 | triade, completing the c\_itadel of enschede

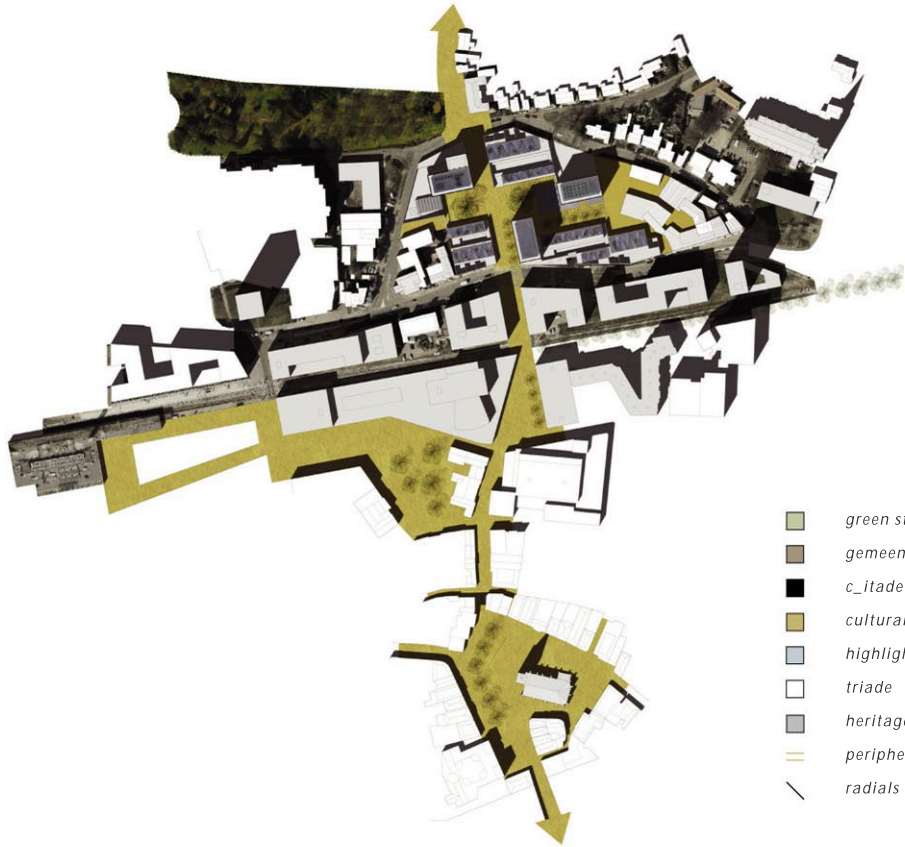
**floris cornelisse + robert verrijt**

berkelselaan 34a  
3037 pg rotterdam

06.48353328

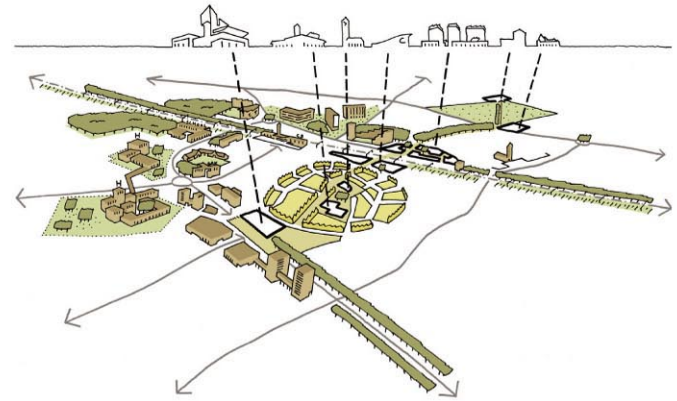
floriscornelisse@gmail.com  
rverrijt@gmail.com



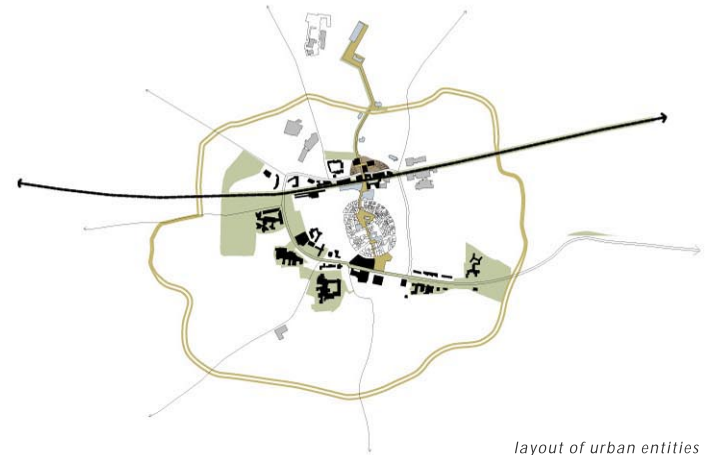


urban design

- green structure
- gemeentewerf
- c\_itadel
- cultural chain
- highlights
- triade
- heritage
- periphery
- radials



cultural chain



layout of urban entities



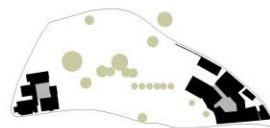
*industrial heritage*



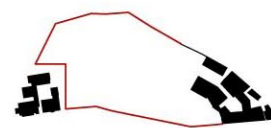
*city chamber*



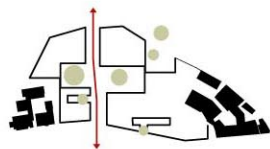
*1. actual situation*



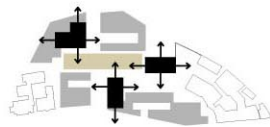
*2. preserved monuments and flora*



*3. century I embracing the site*



*4. passe partout*



*5. triade and city chamber*



*6. imprint of natural elements*



*section glasshouse*



*winterloggia*

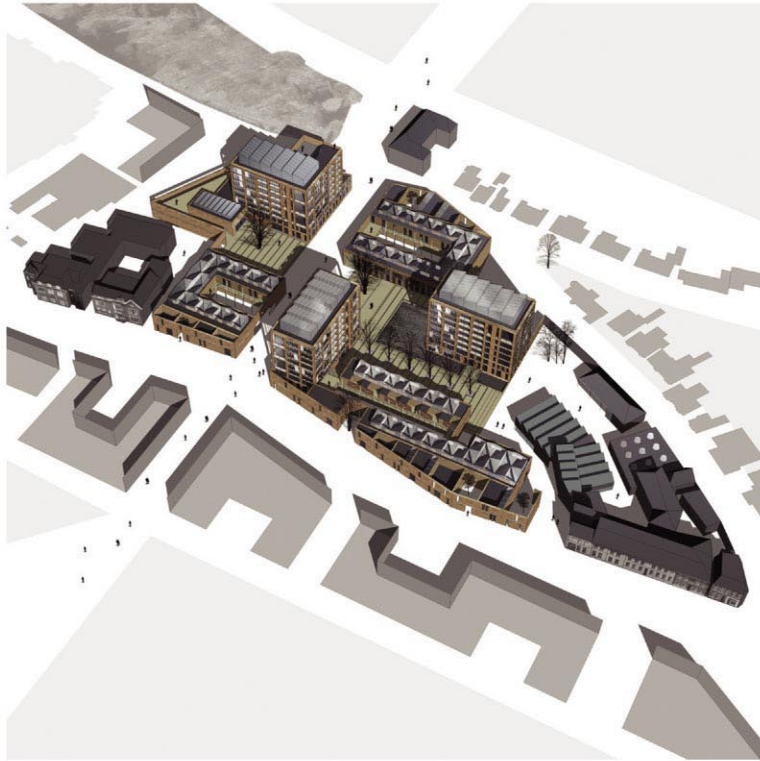




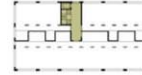
*section aa*



*city silhouette*



layout of intervantion area



**Triade; Completing the C\_itadel of Enschede**  
*first prize european 8 "european urbanity"*

Enschede is a town rooted in a history, which still greatly defines its appearance. The old town centre, the Egg, the nineteenth century industrial complexes, its garden town and the citadel of the New Town with the regional civic facilities are components of an exemplary history of European mid-sized towns, though specific and singular in its manifestation. A synergy has to be sought with this context so that all attention can be put on establishing a comfortable, sustainable and energy efficient environment.

The egg-shaped nucleus of Enschede, the city heart, is surrounded by a belt of public facilities, such as hospitals, schools and government buildings, which cater to a regional scale. This C-shaped 'Citadel' of large dimensioned complexes ends just at the place where the Gemeentewerf begins. The character of the Gemeentewerf would demand for a similar approach in scale. While associating with the character of the Citadel, a 'Triade' of three building blocks, marks the entry point along the cultural axis from the northern part of Enschede toward the city heart.

A 'Ceintuur' of encircling walls on the periphery of the site creates a silent haven in the central court. This court, the 'City Chamber' is defined in space by a heterogeneous framework, a 'Passe Partout' of low-rise and high-rise blocks. The Ceintuur is punctuated at places to allow visual connections to the outside, and letting green areas intertwine with the internal court. The 'Triade' marks a momentary sense of pause along the cultural route. The blocks of the Triade are set back from the periphery in order to instigate curiosity from the outside, as well as providing a distance towards the existing garden town villas.

The strategic location of the project within an attractive dynamic living environment justifies a project with high ambition. The flexible layout of the apartments which allow it to be combined and used in several different ways according to the varied lifestyles of young career minded individuals or couples, as well as additional features such as patios and roof gardens are a step towards fulfilling this ambition.